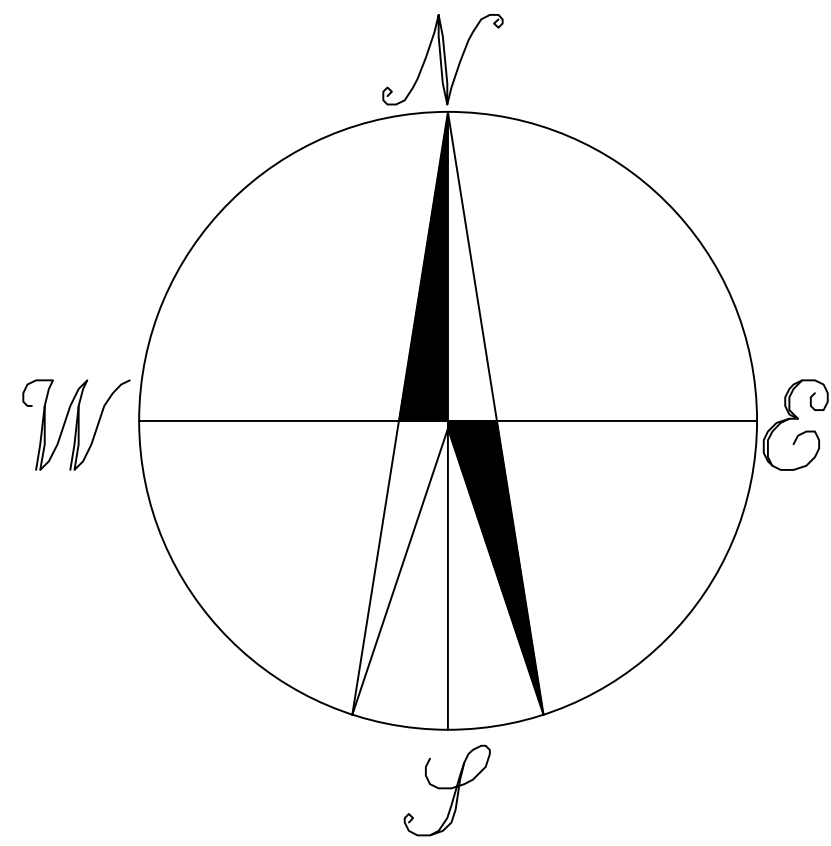


TOWN OF ARRIBA SECTIONS 1 & 12 TOWNSHIP 9 SOUTH RANGE 53 WEST



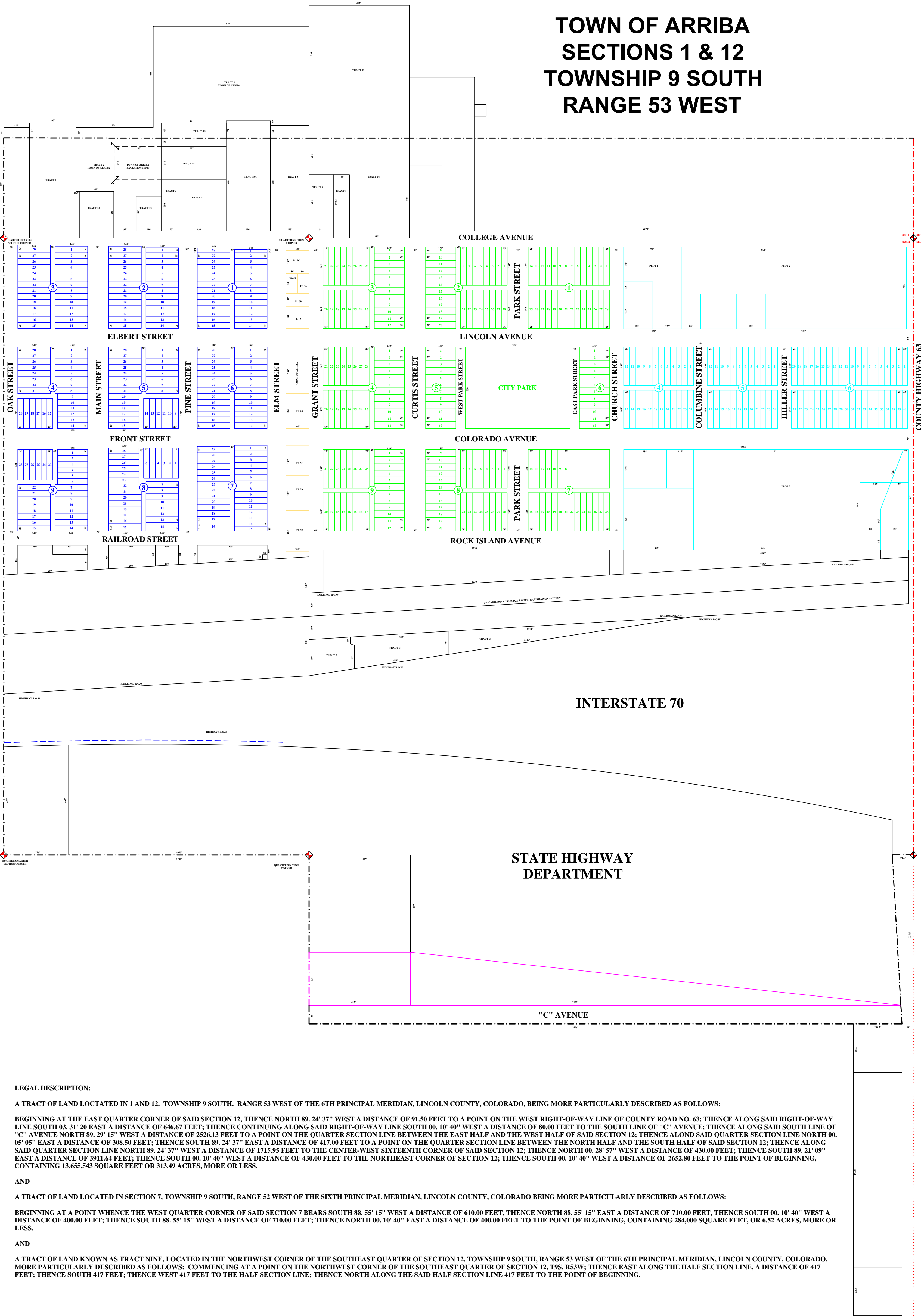
NOT TO SCALE

LEGEND	
ORIGINAL	
FRONTIER ADDITION	
COULSON'S ADDITION	
PARKER ADDITION	
NO MANS LAND	
SECTION LINE	
CITY LIMITS	

MAPS ARE FOR COUNTY PURPOSES ONLY

Lincoln County Assessor's Office, Mapping Dept.
4/11/2006 Town of Arriba.dwg

Drawn By: Jeremiah Higgins 2002



LEGAL DESCRIPTION:

A TRACT OF LAND LOCATED IN 1 AND 12. TOWNSHIP 9 SOUTH. RANGE 53 WEST OF THE 6TH PRINCIPAL MERIDIAN, LINCOLN COUNTY, COLORADO, BEING MORE PARTICULARLY DESCRIBED AS FOLLOWS:
 BEGINNING AT THE EAST QUARTER CORNER OF SAID SECTION 12, THENCE NORTH 89. 24' 37" WEST A DISTANCE OF 91.50 FEET TO A POINT ON THE WEST RIGHT-OF-WAY LINE OF COUNTY ROAD NO. 63; THENCE ALONG SAID RIGHT-OF-WAY LINE SOUTH 03. 31' 20" EAST A DISTANCE OF 646.67 FEET; THENCE CONTINUING ALONG SAID RIGHT-OF-WAY LINE SOUTH 00. 10' 40" WEST A DISTANCE OF 80.00 FEET TO THE SOUTH LINE OF "C" AVENUE; THENCE ALONG SAID SOUTH LINE OF "C" AVENUE NORTH 89. 29' 15" WEST A DISTANCE OF 2526.13 FEET TO A POINT ON THE QUARTER SECTION LINE BETWEEN THE EAST HALF AND THE WEST HALF OF SAID SECTION 12; THENCE ALONG SAID QUARTER SECTION LINE NORTH 00. 05' 05" EAST A DISTANCE OF 308.50 FEET; THENCE SOUTH 89. 24' 37" EAST A DISTANCE OF 417.00 FEET TO A POINT ON THE QUARTER SECTION LINE BETWEEN THE NORTH HALF AND THE SOUTH HALF OF SAID SECTION 12; THENCE ALONG SAID QUARTER SECTION LINE NORTH 89. 24' 37" WEST A DISTANCE OF 1715.95 FEET TO THE CENTER-WEST SIXTEENTH CORNER OF SAID SECTION 12; THENCE NORTH 00. 28' 57" WEST A DISTANCE OF 430.00 FEET; THENCE SOUTH 89. 21' 09" EAST A DISTANCE OF 3911.64 FEET; THENCE SOUTH 00. 10' 40" WEST A DISTANCE OF 430.00 FEET TO THE NORTHEAST CORNER OF SECTION 12; THENCE SOUTH 00. 10' 40" WEST A DISTANCE OF 2652.80 FEET TO THE POINT OF BEGINNING, CONTAINING 13,655,543 SQUARE FEET OR 313.49 ACRES, MORE OR LESS.

AND

A TRACT OF LAND LOCATED IN SECTION 7, TOWNSHIP 9 SOUTH, RANGE 52 WEST OF THE SIXTH PRINCIPAL MERIDIAN, LINCOLN COUNTY, COLORADO BEING MORE PARTICULARLY DESCRIBED AS FOLLOWS:
 BEGINNING AT A POINT WHEN THE WEST QUARTER CORNER OF SAID SECTION 7 BEARS SOUTH 88. 55' 15" WEST A DISTANCE OF 610.00 FEET, THENCE NORTH 88. 55' 15" EAST A DISTANCE OF 710.00 FEET, THENCE SOUTH 00. 10' 40" WEST A DISTANCE OF 400.00 FEET; THENCE SOUTH 88. 55' 15" WEST A DISTANCE OF 710.00 FEET; THENCE NORTH 00. 10' 40" EAST A DISTANCE OF 400.00 FEET TO THE POINT OF BEGINNING, CONTAINING 284,000 SQUARE FEET, OR 6.52 ACRES, MORE OR LESS.

AND

A TRACT OF LAND KNOWN AS TRACT NINE, LOCATED IN THE NORTHWEST CORNER OF THE SOUTHEAST QUARTER OF SECTION 12, TOWNSHIP 9 SOUTH, RANGE 53 WEST OF THE 6TH PRINCIPAL MERIDIAN, LINCOLN COUNTY, COLORADO, MORE PARTICULARLY DESCRIBED AS FOLLOWS: COMMENCING AT A POINT ON THE NORTHWEST CORNER OF THE SOUTHEAST QUARTER OF SECTION 12, T9S, R53W; THENCE EAST ALONG THE HALF SECTION LINE, A DISTANCE OF 417 FEET; THENCE SOUTH 417 FEET; THENCE WEST 417 FEET TO THE HALF SECTION LINE; THENCE NORTH ALONG THE SAID HALF SECTION LINE 417 FEET TO THE POINT OF BEGINNING.